

Enhancing Rural Sustainability through Entrepreneurship and Low External Inputs

Presented by

Johan Marx

Cence Collaborative

25 May 2011





Why Cence?

- Registered section 21 company
- Community Education through National Collaboration and Enablement
- **Development Solutions:**
 - ✓ **Survival:** Food security, shelter, personal security and access to social services;
 - ✓ **Unemployment:** Lack of skills, unemployable skills, lack of or inability to access employment opportunities;
 - ✓ **Health and welfare:** Prevalence and spread of HIV/AIDS, access to health services, health education;
 - ✓ **Safety and security:** Domestic violence, crime, access to and education re legal structures and systems;
 - ✓ **Education:** Access to adequate education at all levels, impact of HIV, lack of cohesive promotion of education as a solution to poverty;
 - ✓ **Personal development:** History of discrimination, cultural norms and beliefs and their role in terms of a new globalised world; and
 - ✓ **Community development:** Sharing of resources, and promotion of innovation, aligning communities to global developments (e.g. ITC) to provide opportunities for growth and development.



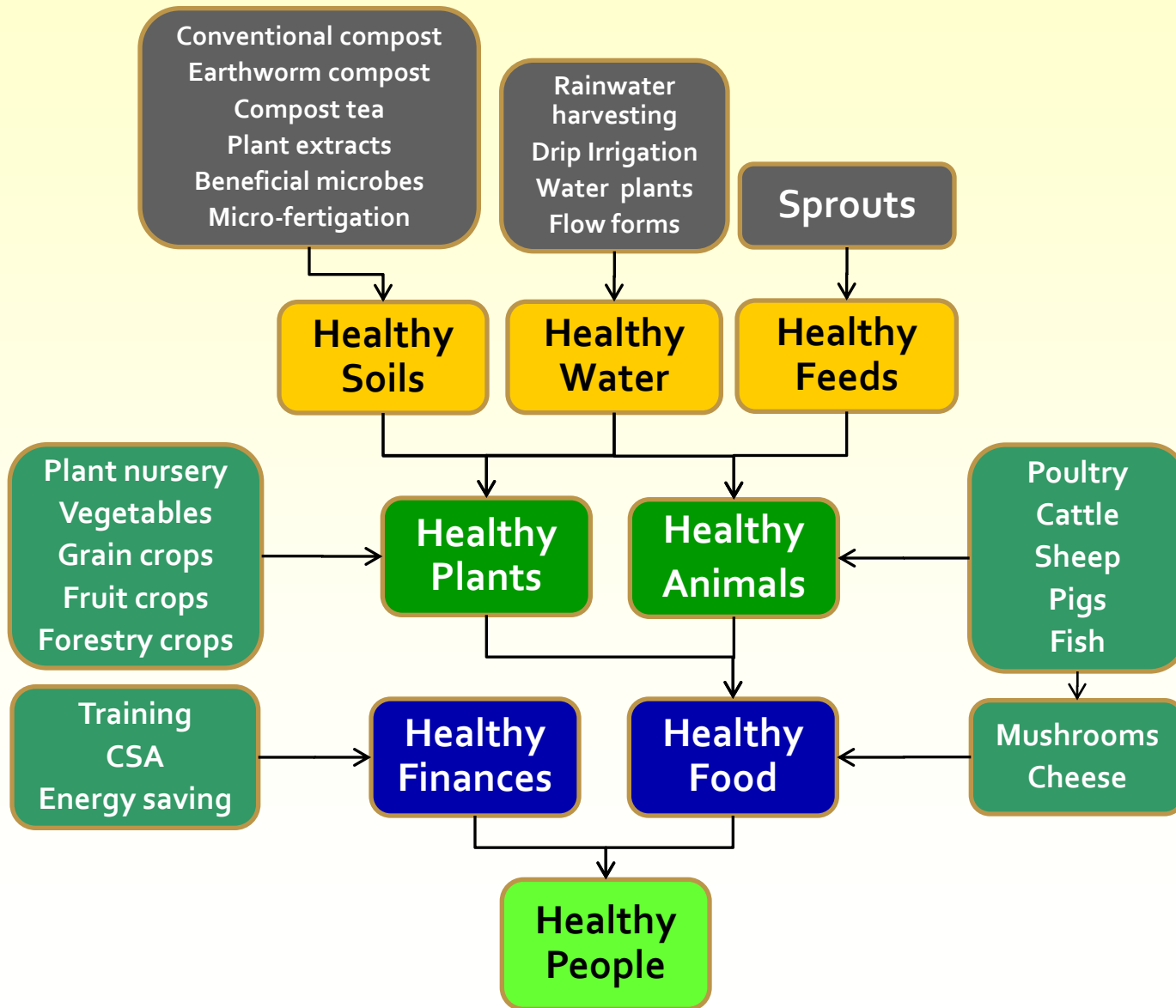
Why CRDP?

- Mission: Creating and maintaining “vibrant, equitable and sustainable communities”
- Objectives: “food, health, education, shared economic growth, social cohesion and development”
- Lives of Rural people to be changed for the better
- Take control of their own destinies
- Sustainability on all levels
- Job and income creation, child pregnancy, HIV infection rates, dependence on social grants and reduction of crime
- Selection of trainees youth development and older people



The Cence AgriExpert Sustainability Model

Enhancing Sustainability through Entrepreneurship and Low External Inputs



Healthy People

- Ultimate outcome of the sustainability model
- Healthy Communities
- Healthy Individuals
- Healthy Environment



Healthy Finances

- Extensive Training of Participants
- Councils of Stakeholders
- Community Supported Agriculture Structures
- Co-operatives
- Training and Skills transfer: Train-the-trainer
- Agri Tourism
- Entrepreneurship Training
- Energy saving measures



Healthy Food

- Quality and quantity
- Food security
- District
- Communities
- Households



Healthy Animals

- Animal Husbandry
- Healthy water, soil and animal feed
- Community kraals
- Sprouts feed production entrepreneurial activity
- Used by single-stomach animals such as pigs, chickens, ostriches and donkeys.



Healthy Water

- Very scarce resource in South Africa
- Rainwater harvesting, drip irrigation
- Flow forms (a biodynamic methodology)
- Energise and revitalise water for irrigation, animal and human consumption



Healthy Soils

- Conventional composting
- Earthworm composting
- Compost tea production
- Production and supply of beneficial microbes

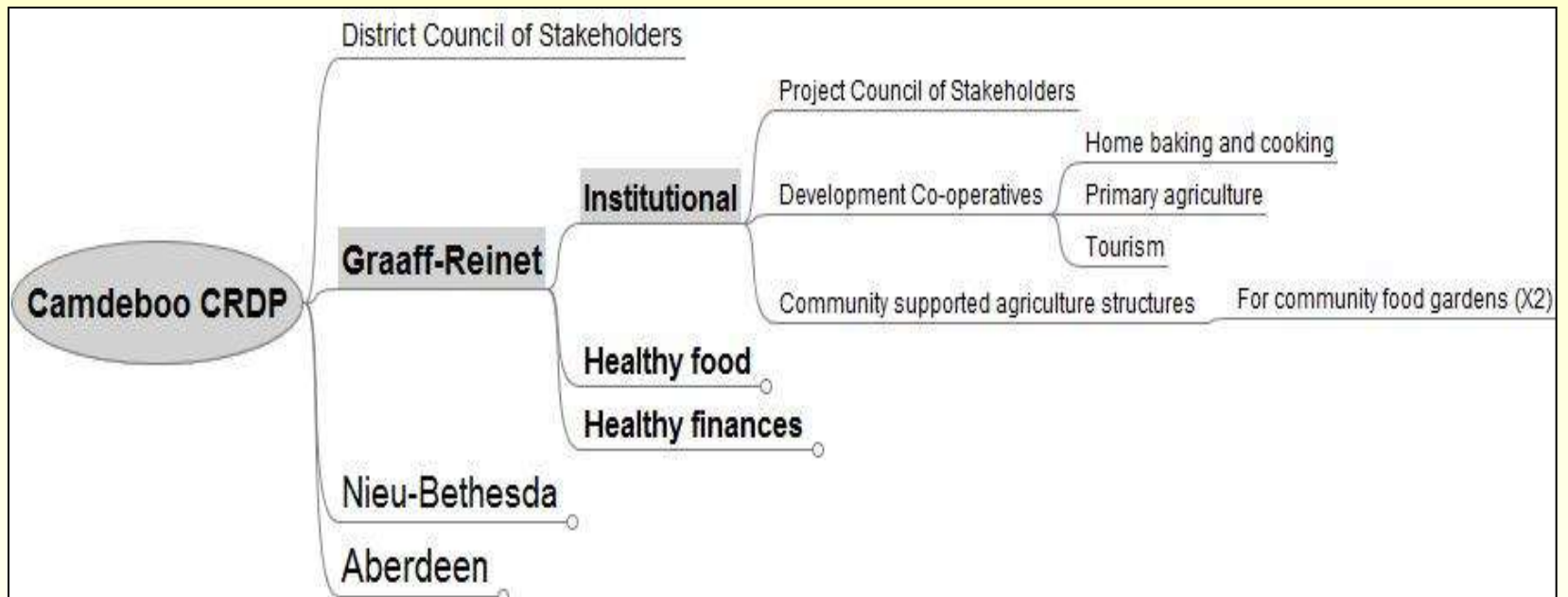


Healthy Plants

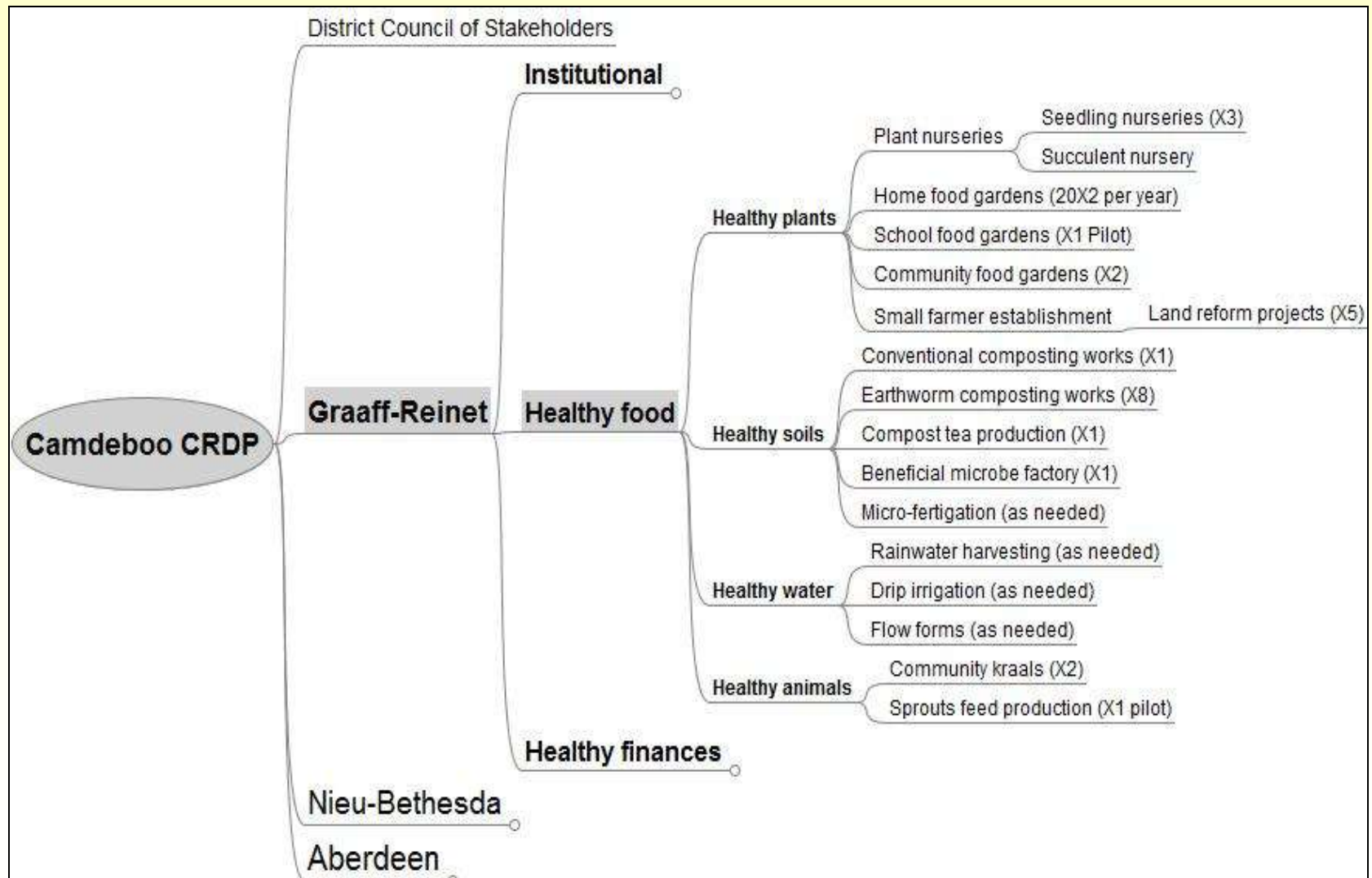
- Local seedling and plant nurseries
- Home food gardens
- School Food Gardens
- Community Food Gardens
- Food Gardens at Clinics, Prisons, Municipal commonage lands



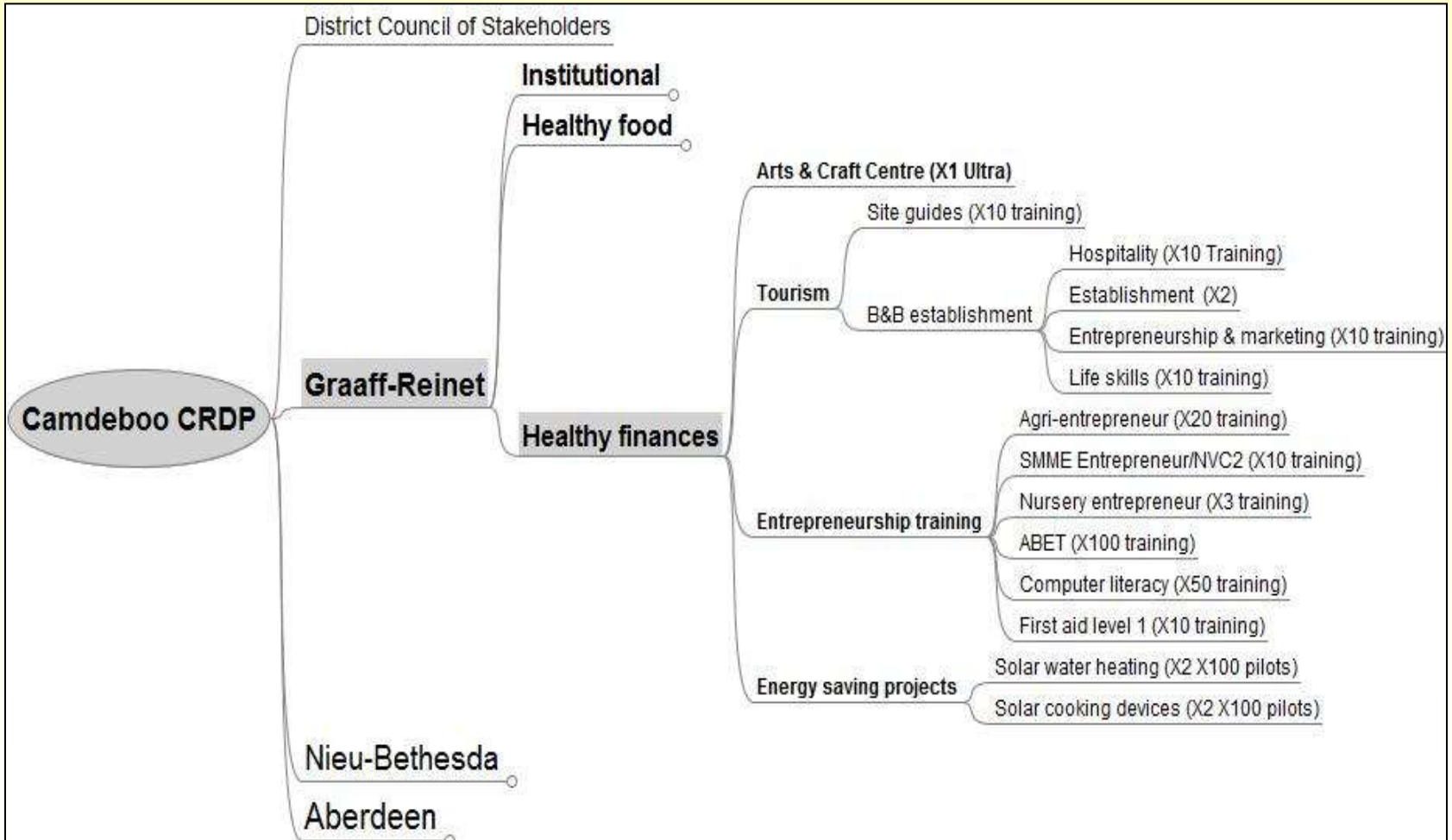
Camdeboo CRDP Institutional



Camdeboo CRDP Healthy Food



Camdeboo CRDP Healthy Finances



The same basic empowerment program is planned for Aberdeen and Nieu-Bethesda as well.

Conclusion

- Large number of beneficiaries can experience exposure to skills development, promotion of food and income security
- Beneficiaries acquire basic and advanced food gardening, farming, marketing, tourism and entrepreneurial skills
- Be encouraged and mentored to become small commercial farmers and entrepreneurs
- Let's PPP towards a better life for all South Africans.



Contact Details

- Contact person: Johan Marx
- Phone: +27 21 883 8000
- Fax: +27 86 556 4526
- E-mail: johan@cence.co.za
- Cell no: 079 7103 973
- Valerida Centre, 1st Floor, Piet Retief Street, Stellenbosch, 7600
- P.O. Box 12662, Die Boord, Stellenbosch, 7613
- www.cence.co.za

